

ESTIMATED 2010 DEMOGRAPHICS		
	POPULATION	AVG HH INCOME
1 Mile.....	599	\$125,599
3 Mile.....	5,971	\$115,901
5 Mile.....	23,555	\$90,423

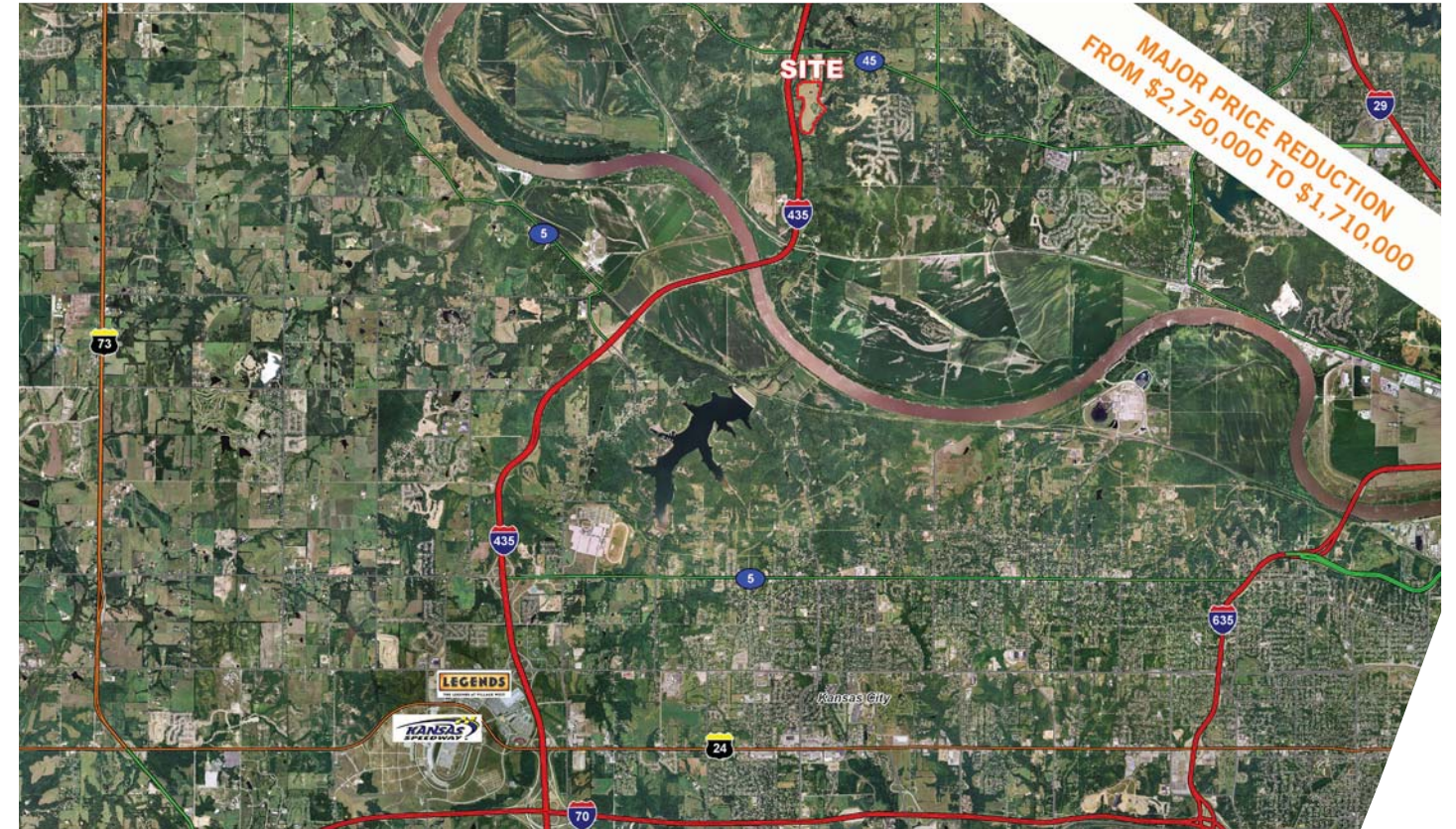
For more information, contact:

**Craig Kelly, SIOR**  
816.412.0279  
craig.kelly@cassidyurley.com

2600 Grand Boulevard  
Suite 1000  
Kansas City, MO 64108

www.cassidyurley.com

The information contained herein was obtained from sources we consider reliable. We cannot be responsible, however, for errors, omissions, prior sales, withdrawal from the market or change in price. Seller and broker make no representation as to the environmental condition of the property and recommend purchaser's independent investigation.



FOR SALE - Bank Owned

SEC I-435 & 45 Highway  
Parkville, MO

- 75± Acres Approved for Apartments / Rowhomes / Single Family (Will Divide and Sell Separately)
- Excellent Accessibility and Visibility to I-435
- Immediate Highway Access to the Kansas Speedway and The Legends
- Highly Regarded Parkville School District
- Apartments - 22± Acres (288 Units) - \$1,200,000
- Rowhomes/8 Plexes - 17± Acres (104 Units) - \$600,000
- 8 Plexes - 4± Acres (24 Units) - \$200,000
- Single Family - 33± Acres (69 Lots) - \$400,000

For more information, contact:

**Craig Kelly, SIOR**  
816.412.0279  
craig.kelly@cassidyurley.com

2600 Grand Boulevard  
Suite 1000  
Kansas City, MO 64108

www.cassidyurley.com

# SEC I-435 & 45 HIGHWAY

# PARKVILLE, MISSOURI

